



16th Annual Health Equity Symposium



**ROLE OF AI IN HEALTH
POLICY AND PRACTICES**

**May 8
2025**

JOSEPH B. MARTIN
CONFERENCE CENTER
HARVARD MEDICAL SCHOOL

HISTORY AND MISSION

The Reede Scholars Health Equity Symposium was established to honor Joan Y. Reede, a mentor, inspirational leader, and tireless advocate for vulnerable populations. The Reede Scholars, Inc. is the alumni organization of the Commonwealth Fund Fellowship Program in Minority Health Policy, California Endowment Scholars in Health Policy, and Joseph L. Henry Oral Health Fellowship programs at Harvard Medical School.



MISSION

Our mission is to engage and nurture a network of diverse leaders for collective action to achieve health equity. We shall effect change through research, education, policy, practice, and charitable endeavors.

GOALS

Our growing network of scholars seeks to achieve the following goals:

- Maintain a group of experts and advocates for health equity and progressive health policy.
- Promote quality improvement in the provision of health services for underserved communities nationally and globally.
- Promote professional and social relationships and collaboration within the cohort.
- Support endeavors to educate future Reede Scholars.

VISION

To be a nationally and internationally recognized organization whose members work collectively, support one another, and improve the well-being and health outcomes of those belonging to vulnerable populations. "Of all the forms of inequality, injustice in healthcare is the most shocking and inhumane." -Dr. Martin Luther King Jr., Medical Committee for Human Rights, 1967.

SYNOPSIS

The 16th Annual Health Equity Symposium, hosted by the Reede Scholars, will delve into the transformative potential of Artificial Intelligence (AI) in advancing health equity.

This symposium will gather experts from diverse fields to discuss how AI can be leveraged to address disparities in health policy and practices. Key discussions will focus on the ethical use of AI, data governance, and the implementation of AI-driven solutions to improve health outcomes for underserved populations.



LEARNING OBJECTIVES

- 1. Understand the Role of AI in Health Policy and Practices:** Gain insights into how AI technologies can be applied to identify and address health disparities.
- 2. Ethical Considerations:** Learn about the ethical implications of using AI in health policy, including issues of bias and data privacy.
- 3. Data Governance:** Explore best practices for data governance to ensure equitable and responsible use of AI in health policy.
- 4. Case Studies and Applications:** Review real-world examples of AI applications in health policy that have successfully advanced health equity.
- 5. Future Directions:** Discuss the future potential of AI in creating more equitable health systems and policies.



WELCOME

**MARY E. FLEMING
MD, MPH, FACOG**

President, The Reede Scholars



Greetings Scholars and Guests,

Welcome to the 16th Annual Health Equity Symposium! Together, we honor the legacy of Dr. Joan Reede and our shared commitment to advancing health equity. The Reede Scholars continue to lead meaningful work—individually in their communities and collectively through collaboration.

As we navigate challenges like systemic inequities, threats to reproductive rights, and racial injustice, we recognize the urgency of our work and the opportunities ahead. More Reede Scholars than ever are shaping healthcare policy, leading institutions, and driving change at the highest levels.

The influence of our scholars is undeniable. Reede Scholars are shaping policies at the highest levels, leading hospitals and health systems, and breaking barriers in academia and public health. We celebrate those who continue to push boundaries, including Dr. Joe Betancourt, a Reede Scholar fellow and now President of The Commonwealth Fund—a testament to the power of leadership cultivated within this network.

I would also like to extend my deepest gratitude to the Board of Directors for their hard work and dedication. Their leadership ensures that our mission remains strong and that the Reede Scholars continue to thrive, grow, and create lasting impact in the field of health equity.

This symposium is a space for inspiration, synergy, and action. Engage, share, and build with one another as we continue the fight for equitable healthcare.

Enjoy the symposium, and thank you for supporting the Reede Scholars.

Best in Health & Spirit,



Mary E. Fleming, MD, MPH
President, Reede Scholars Inc.





2:00 pm

Welcome & Introductions

Mary E. Fleming, MD, MPH, FACOG

President, Reede Scholars

2:15 pm

Panel Discussion

Moderator:

Felicia Collins, MD, MPH, FAAP

Physician and Public Health Leader
Member, Reede Scholars

Panelists:

Leo Anthony Celi, MD, MSc, MPH

Sr. Research Scientist, Massachusetts Institute of
Technology Clinical Research Director, Laboratory
of Computational Physiology, Co-Director, MIT Critical
Data

Hawazin Elani, BDS, PhD

Assistant Professor in the Department of Oral Health
Policy and Epidemiology at the Harvard School of
Dental Medicine and the Department of Health Policy
and Management at the Harvard T.H. Chan School of
Public Health

Fatima Paruk, MD

Healthcare & Digital Strategy Advisor, Investor
Former Chief Health Officer, Salesforce

3:20 pm

Conversation/Q&A

Audience participants

3:50 pm

Vision Award Presentation

President Fleming

4:00 pm

Reede Scholars Annual Family Photo

Reception & Networking to Follow

Creating a More Equitable Oral Health System



The inequities in our society are all too clear — and those same inequities carry through into the oral health care system. Today, more than 76.5 million Americans have no dental coverage, missing the chance to live a life with good oral health.

Join CareQuest Institute for Oral Health as we work to build the oral health system of the future.



CareQuest 
Institute for Oral Health.

**Together, we're improving
the oral health of all.**

Visit us at carequest.org

MODERATOR

FELICIA COLLINS MD, MPH, FAAP

Physician and Public Health Leader
Member, Reede Scholars



Dr. Felicia Collins describes herself as a pediatrician by training and a public health practitioner at heart with a passion for serving vulnerable and underserved communities across the nation. In December 2024, she retired from the U.S Department of Health and Human Services (HHS) after serving for 25 years in the HHS Office of the Secretary (OS), the Health Resources and Services Administration (HRSA), and the Food and Drug Administration (FDA). At the time of her retirement, she held the rank of Rear Admiral and Assistant Surgeon General in the U.S Public Health Service (USPHS) Commissioned Corps.

Dr. Collins' roles at HHS included serving as the Deputy Assistant Secretary for Minority Health and Director of the Office of the Secretary's Office of Minority Health (2018 - 2024), Acting Assistant Secretary for Health (2021), Senior Advisor in the HRSA Bureau of Primary Health Care (BPHC) that administers the Federally Qualified Health Center Program (2010 - 2019), and Pediatric Drug Medical Reviewer at the FDA (2006 - 2010). She also served as an Assistant Professor of Pediatrics at the Uniformed Services University of the Health Sciences (2002 - 2012) and a legislative aide for the Congressional Caucus for Women's Issues in the U.S. House of Representatives (1994).

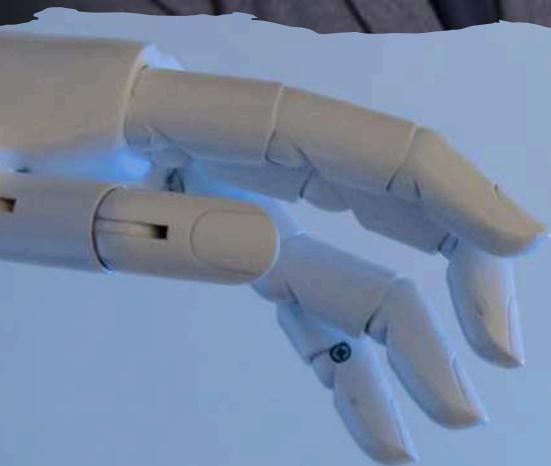
Dr. Collins received her undergraduate degree from Yale University and her medical degree from Harvard Medical School. She completed a residency in primary care pediatrics at Children's Hospital in Boston, Massachusetts, and received her Master of Public Health degree from the Harvard School of Public Health as a Commonwealth Fund Fellow in Minority Health Policy.

PANELIST

**LEO ANTHONY
CELI
MD, MSC, MPH**

**Sr. Research Scientist, Massachusetts Institute of Technology
Clinical Research Director, Laboratory of Computational Physiology,
Co-Director, MIT Critical Data**

Dr. Celi is the principal investigator behind the Medical Information Mart for Intensive Care (MIMIC) and its offsprings, MIMIC-CXR, MIMIC-ED, MIMIC-ECHO, and MIMIC-ECG. With close to 100k users worldwide, an open codebase, and close to 10k publications in Google Scholar, the datasets have undoubtedly shaped the course of machine learning in healthcare in the United States and beyond. His group has written 3 open-access textbooks: “Secondary Analysis of Electronic Health Records” in 2016, “Global Health Informatics: Principles of eHealth and mHealth to Improve Quality of Care” in 2017, and “Leveraging Data Science for Global Health” in 2020. The first has been downloaded close to 2 million times and translated into Mandarin, Spanish, Korean and Portuguese. The group has created two open online courses, “Global Health Informatics” and “Collaborative Data Science for Healthcare.” Finally, in partnership with hospitals, universities and professional societies across the globe, Dr. Celi and his team have organized over 50 datathons in 25 countries, bringing together students, clinicians, researchers, and engineers to leverage data routinely collected in the process of care.



PANELIST

HAWAZIN ELANI

BDS, PHD

Assistant Professor in the Department of Oral Health Policy and Epidemiology at the Harvard School of Dental Medicine and the Department of Health Policy and Management at the Harvard T.H. Chan School of Public Health



Hawazin Elani is an Assistant Professor in the Department of Oral Health Policy and Epidemiology at the Harvard School of Dental Medicine and the Department of Health Policy and Management at the Harvard T.H. Chan School of Public Health. Her research investigates the impact of federal and state health policies on the oral health of vulnerable populations, with a specific focus on social determinants of population health, health disparities, and improving access to oral healthcare services. She leverages big data analytics, including causal inference, econometrics, and machine learning approaches, to inform data-driven policymaking to reduce health disparities.

Dr. Elani has been recognized with several honors, including the NIMHD-Health Disparities Research Scholar, the Harvard School of Dental Medicine Distinguished Junior Faculty Award, and the Harvard Medical School Young Mentor Award. Dr. Elani leads multiple projects funded by the National Institutes of Health and other foundation funds.

PANELIST

FATIMA
PARUK MD

**Healthcare & Digital Strategy Advisor, Investor
Former Chief Health Officer, Salesforce**

Dr. Paruk is a healthcare executive, physician, and technology leader with over 20 years of experience in clinical practice, health IT, and AI-driven innovation. She has created and executed strategic initiatives across payers, providers, life science, and med-tech firms, most recently serving as Chief Health Officer at Salesforce where she drove healthcare AI adoption and business expansion. She has served in corporate leadership roles at Microsoft, McKinsey & Co. and Allscripts, in addition to advisory boards for healthcare and technology companies, and non-profits. Named a Top 25 Healthcare Influencer by MM+M Marketing and one of the Most Powerful Women in Health IT by Health Data Management, Dr. Paruk is a passionate about AI governance, digital health strategy, and healthcare transformation that enables access and equitable outcomes.



2025 Vision Award

The Reede Scholars, Inc Vision Award was established in 2017 to recognize and honor individuals who have made significant contributions to the organization through financial support or dedicated volunteer work.

This award is presented during the Annual Health Equity Symposium Program. Although presenting the award has become a tradition, it is not required to do so every year.



YING WANG

Associate Director, Minority
Faculty Development Program

Harvard Medical School

Past Recipients

Ralph Fuccillo, Former Chair, DentaQuest Institute for Oral Health 2017

Brain Swann, RSI Founding Member, 2018

Joan Reede, Dean MHPF 2019

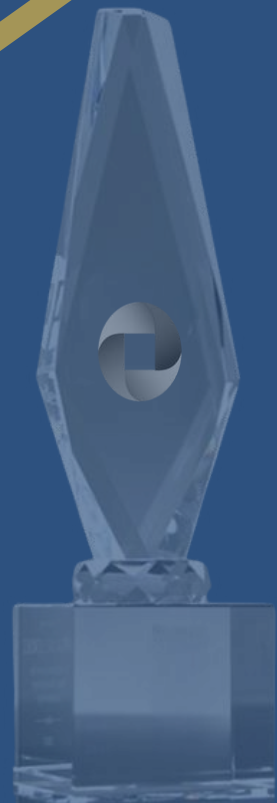
Kavitha Prakash, RSI Treasurer 2020

Cynthia Hodge, Chair, RSI BOD, 2021

Elna Nagasako, Chairperson, Ad Hoc Research Committee 2022

Myechia Minter-Jordan, former CEO of CareQuest 2023

Don Lee, RSI Treasurer 2024



SYMPOSIUM CHAIR

Don S. Lee, MD, MPH

Internal Medicine Hospitalist and
Physician Advisor

EXECUTIVE OFFICERS

Mary E. Fleming, MD, MPH
PRESIDENT

Nicole del Castillo, MD, MPH
SECRETARY

Don S. Lee, MD, MPH
TREASURER

BOARD OF DIRECTORS

C. E. Hodge, DMD, MPH, MPA
CHAIR

Ann Elrington, MD, MPH
Alexy Arauz Boudreau, MD, MPH
Shelia E. Roundtree, MD, MPH
Kevin Simon, MD, MPH
D’Nyce Williams, MD, MPH, MPA
Kamillah Wood, MD, MPH

Ralph Fuccillo, MS
ADVISOR



[Youtube.com/@reedescholars1028](https://www.youtube.com/@reedescholars1028)

Reedescholars.org

OUR SPONSORS



2025 Annual Health Equity
Symposium

2025 Annual Leadership
Retreat Conference



FRIENDS OF THE REEDE SCHOLARS

